

Greater LAFAYETTE  
CLIMATE ACTION PLAN

# ANNUAL REPORT

# 2025



Prepared by

**GLCAP**  
**JOINT LEADERSHIP**  
**COMMITTEE**

Earth Day 2026

# TABLE OF CONTENTS

<b>LETTER FROM THE GLCAP JLC</b>	<b>1</b>
<b>IMPLEMENTATION PROGRESS SUMMARY</b>	<b>2</b>
<b>IMPLEMENTATION PROGRESS BY FOCUS AREA</b>	<b>4</b>
<b>ENERGY USE IN THE BUILT ENVIRONMENT</b>	<b>5</b>
<b>TRANSPORTATION</b>	<b>7</b>
<b>AGRICULTURE &amp; FORESTRY</b>	<b>9</b>
<b>WATER, WASTEWATER, &amp; SOLID WASTE</b>	<b>11</b>
<b>MOVING FORWARD</b>	<b>13</b>

# LETTER FROM THE GLCAP JOINT LEADERSHIP COMMITTEE

Since its adoption in January 2023, the Greater Lafayette Climate Action Plan (GLCAP) has continued to serve as a catalyst for advancing social, economic, and environmental sustainability across our community. As a collaborative effort between the cities of Lafayette and West Lafayette, Tippecanoe County, and numerous stakeholders, the GLCAP reflects our shared commitment to building strong partnerships and engaging stakeholders in meaningful, solutions-driven climate action.

In 2025, implementation efforts gained further momentum through expanded programming and regional collaboration. We were pleased to welcome McKinney Climate Fellow Cooper Kleinmaier through Indiana University's Environmental Resilience Institute, who played a key role in spearheading the development of initiatives to advance energy-efficient electrification, which supports both emissions reductions and long-term energy cost savings for residents and businesses.



At the same time, the administrative and policy landscapes at the state and federal levels continue to evolve, shaping funding streams, regulatory frameworks, and implementation pathways for sustainability initiatives nationwide. While these shifts present challenges, they also underscore the importance of strong local leadership and resilient partnerships. Greater Lafayette is fortunate to be part of a robust and growing regional sustainability network across Indiana and beyond that is committed to sharing best practices, coordinating efforts, and supporting one another through changing conditions.

As we move forward, we reflect with pride on the collective progress made possible by our community partners, local leaders, businesses, and residents. Ongoing collaboration and shared commitment are essential to achieving our climate goals as we remain focused on practical, community-centered solutions that enhance resilience, improve public health, and support long-term economic vitality. By continuing to work in partnership, both locally and regionally, we are building a more sustainable, resilient, and thriving Greater Lafayette for years to come.





# IMPLEMENTATION PROGRESS SUMMARY

Serving as a roadmap for climate action within our community, the Greater Lafayette Climate Action Plan takes advantage of policies and initiatives that our local government is uniquely positioned to implement and will ultimately benefit Greater Lafayette for years to come. Throughout the first three years of implementation, the Greater Lafayette Climate Action Plan (GLCAP) Joint Leadership Committee, alongside dedicated community partners, have been working collaboratively to further the shared vision and fulfill the mission of the plan.

***Vision:*** *A climate-resilient community, a reduced carbon footprint, and an equitable quality of life for all within Greater Lafayette.*

***Mission:*** *To build a resilient Greater Lafayette by designing policies and implementing initiatives to reduce greenhouse gas emissions and protect equitable quality of life for current and future generations.*

Efforts to implement the goals listed within the plan are aimed at bolstering climate resilience via adaptation and mitigation. Adaptation involves preparing for climate change impacts already happening or soon-to-come, whereas mitigation involves reducing the future effects of climate change by reducing greenhouse gas emissions. The reduction of greenhouse gas emissions, in particular, aids in our community's ability to meet our data-supported science-based target.

***Science-based target:*** *Climate goals in line with the latest climate science. They represent a community's fair share of the ambition necessary to meet the Paris Agreement commitment to keep warming below 1.5°C.*

**58% BY 2030**

Greater Lafayette's science-based target is a 58% reduction in community wide greenhouse gas emissions by 2030.

Throughout GLCAP planning and implementation, a strong focus has been placed on promoting equity as vulnerable community members often face disproportionate burdens caused by extreme weather events and other implications of a changing climate. The third year of implementation continued this commitment, with the committee prioritizing strategies that reduce climate-related risks, expand access to resources, and strengthen adaptive capacity for those most at risk.

To further inform equitable plan implementation, the committee sustained and expanded public engagement efforts across Greater Lafayette throughout 2025. In June, the committee once again hosted GreenFest (formerly known as the Green Expo), the annual community event led by the cities of Lafayette, West Lafayette, and Tippecanoe County to raise awareness of sustainability initiatives, provide updates on GLCAP progress, and create opportunities for hands-on engagement. The event convened community members, local organizations, and regional partners to highlight practical climate solutions and celebrate ongoing progress.

## **JOIN US AT GREENFEST 2026 ON JUNE 6TH!**

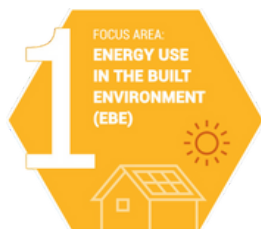
For more information on this year's event, please visit the [GreenFest webpage](#).

Committee members also continued supporting and participating in partner-led community events, including Riverfest, De-Trash the Wabash, and E-Waste Day, helping integrate climate and sustainability education into well-established local traditions. In addition, GLCAP representatives delivered educational presentations and workshops for community organizations, neighborhood groups, businesses, and schools throughout the year, expanding awareness of climate strategies and pathways for local action.

Regional collaboration remained a defining feature of 2025. Through participation in Indiana's broader sustainability network and peer-learning exchanges, committee members shared best practices, discussed funding and policy developments, and identified opportunities to align local efforts with regional and statewide initiatives. These partnerships strengthened implementation capacity and reinforced Greater Lafayette's role within Indiana's growing climate leadership community.

The following sections contain further information related to GLCAP goals and actions addressed in 2025, including an overview of the focus areas that are used to categorize strategies for plan implementation.

# IMPLEMENTATION PROGRESS BY FOCUS AREA(S)



Technical strategies for plan implementation are divided into four focus areas: energy use in the built environment, transportation, agriculture & forestry, and water, wastewater, & solid waste. Within each focus area are goals and related actions that have been designed to progress climate adaptation and mitigation within our community. In total, the plan contains 12 goals with 71 related actions categorized accordingly within each of the four focus areas. Within just two years of implementation, the cities of Lafayette, West Lafayette, and Tippecanoe County, alongside dedicated partners, have initiated progress on **50 of these actions – 70% of total actions.**

One goal within each focus area is a public priority goal, or a goal that the public identified as a top priority of focus during public input sessions held throughout the planning process. The public priority goal within Focus Area 1: Energy Use in the Built Environment, for example, is Goal 2: Begin Transition from Fossil Fuels to Renewable Sources. Throughout plan implementation thus far, public priority goals have been used to guide climate action with a focus on equity.

The following sections highlight goals that have been progressed within each focus area, and those marked with an exclamation point (!) are public priority goals.\* These efforts reflect the ongoing dedication of our community to the goals set forth in the GLCAP and demonstrate our region's commitment to fostering a sustainable future for all.

*\*The GLCAP Joint Leadership Committee recognizes that the following goals are not the only goals being progressed within our community. If you or your organization are taking action to make progress on GLCAP goals, please send us an update via the “Get In Touch” form on the GLCAP website: [greaterlafayetteclimate.com](http://greaterlafayetteclimate.com)!*

# 1

# ENERGY USE IN THE BUILT ENVIRONMENT

**GOAL 1:** Increase Energy Efficiency of Buildings and Infrastructure

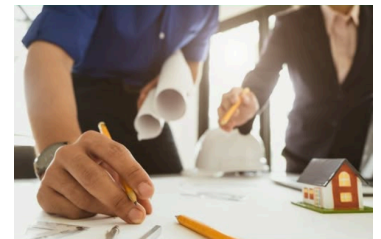
## **EBE 1-B: Hold public education and outreach campaign on energy consumption and building efficiency.**

The City of Lafayette participated in the [Indiana University Environmental Resilience Institute's Resilience Cohort](#), focusing on the development of a Heat Pump Accelerator program. This initiative advances contractor engagement, public education, and adoption of high-efficiency heat pump technologies to support building electrification. By promoting energy-efficient heating and cooling solutions, the program reduces emissions while delivering long-term cost savings for residents and businesses.



## **EBE 1-E: Identify funding for improving energy efficiency in low income or multi-family homes. Provide education on these programs.**

The cities of Lafayette and West Lafayette tracked and promoted opportunities through the [Indiana Energy Saver Program](#) and the [Indiana Energy Independence Fund \(IEIF\)](#) to help residents, businesses, and institutions access incentives for energy efficiency and renewable energy improvements. These funding mechanisms expand financial accessibility to clean energy technologies and support local implementation of state and federal programs. Leveraging available incentives remains a key strategy for accelerating equitable emissions reductions.



**INDIANA ENERGY**  
SAVER PROGRAM  
Save Energy. Cut Costs.



# 1

# ENERGY USE IN THE BUILT ENVIRONMENT

**GOAL 2: Begin Transition from Fossil Fuels to Renewable Sources - Public Priority Goal**



## COMMUNITY SPOTLIGHT

### EBE 2-A: Gov. operations: Create Renewable Energy Master Plan for Government Operations.

Through partnership with the City of West Lafayette, the [West Lafayette Public Library](#) completed a solar installation via an innovative financing model that enables immediate energy savings without upfront ownership. This project highlights how community institutions can leverage creative partnerships and collaborative planning to advance renewable energy adoption while managing financial risk.



### EBE 2-C: Explore ordinances requiring new developments to meet sustainability standards or include sustainable features such as being solar-ready.

The cities of Lafayette and West Lafayette participated in the U.S. Green Building Council's first-ever [Local Green Building Policy Accelerator](#) to explore policy pathways that advance high-performance, energy-efficient buildings. Through peer exchange and technical assistance, the City evaluated strategies to align local development practices with sustainability best practices. This participation strengthens long-term capacity to reduce building-sector emissions and enhance resilience through policy innovation.



### EBE 2-I: Achieve SolSmart rating by specific target date.

In 2025, the cities of Lafayette and West Lafayette earned [SolSmart](#) Silver designation, a national recognition for communities that make it faster, easier, and more affordable to go solar. This achievement reflects coordinated efforts to streamline permitting and inspection processes, enhance solar-friendly zoning practices, and expand public education around solar energy. The designation reinforces Greater Lafayette's leadership in advancing clean energy deployment in alignment with shared resilience goals.



# 2

# TRANSPORTATION

## GOAL 1: Reduce Vehicle Miles Traveled

### COMMUNITY SPOTLIGHT

#### T 1-D: Advertise and expand rideshare & bus options to connect residential areas to industrial/high employment areas.

[CityBus](#) advanced updates to its long-range strategic plan, outlining future service improvements, fleet modernization, and infrastructure investments. The updated plan reflects a continued commitment to expanding reliable and efficient public transit options across Greater Lafayette. Strengthening public transportation is critical to reducing single-occupancy vehicle use and achieving GLCAP transportation sector goals.



#### T 1-E: Invest in trail projects/implement existing plans for bike infrastructure and complete streets.

Building on progress reported in 2024, the [Sagamore Parkway Trail expansion](#) advanced further in 2025, strengthening a key east-west corridor for pedestrians and cyclists. Continued investment in this high-visibility route enhances connectivity across major transportation corridors and increases access to safe, non-motorized travel options. The project represents sustained momentum toward a more multimodal and resilient transportation network.



Changes to transportation planning and infrastructure on [Purdue University's](#) campus continue to influence regional travel patterns and vehicle miles traveled (VMT). Investments in pedestrian zones, bike infrastructure, and campus mobility strategies contribute to reduced reliance on personal vehicles in key activity centers. Collaboration between municipal partners and Purdue remains essential to managing growth while advancing shared climate and mobility objectives.



# 2 TRANSPORTATION

## T 1-J: Increase implementation of roundabouts.

In Lafayette, transportation improvements along [Park East Boulevard](#) included expanded bike infrastructure and the addition of modern roundabouts to enhance traffic safety and flow. These upgrades improve accessibility for cyclists and pedestrians while reducing congestion and idling-related emissions. Integrating safety and multimodal design elements reflects the City’s commitment to climate-conscious transportation planning.



**GOAL 2: Incentivize Zero and Low Carbon Fuel Transit and Equipment - Public Priority Goal**



## T 2-B: Develop education programs to support EV adoption.

The cities of Lafayette and West Lafayette both earned [Charging Smart](#) Bronze designation in 2025 by strengthening policies and planning practices that support electric vehicle (EV) readiness. Efforts included evaluating permitting processes, identifying priority charging locations, coordinating with regional partners to expand charging infrastructure, and providing educational opportunities for community members. These actions help accelerate EV adoption and reduce transportation-related greenhouse gas emissions.



# 3 AGRICULTURE & FORESTRY

## GOAL 1: Support a climate-ready farming community

### AF 1-A: Support local groups working to increase best management practices (cover crops, filter strips, and grassed waterways).

WREC continued advancing land conservation and watershed protection efforts throughout 2025, supporting both climate mitigation and ecosystem resilience goals. Expanded conservation partnerships encouraged agricultural best practices, including first-time adoption of cover crops by local farmers, which improve soil health, reduce runoff, and increase carbon sequestration.

Related water quality monitoring efforts include citizen science-powered initiatives to collect samples and measurements throughout the Great Bend of the Wabash River and Wildcat Creek watersheds. These efforts strengthen regional climate resilience while supporting long-term agricultural sustainability.



## GOAL 2: Enhance, Protect, and Improve Access to Our Natural Resources - Public Priority Goal



### AF 2-A: Gov. operations: Increase use of native plants in all government landscaping projects.

Community-led native plant sales, invasive species removal events, and plant swap initiatives gained continued momentum in 2025. By promoting native landscaping and reducing invasive species, these efforts support pollinator habitat, biodiversity, and long-term ecosystem health. Expanding access to native plants empowers residents to contribute directly to climate adaptation and water quality goals.



### AF 2-B: Gov. operations: create a plan to eliminate the invasive plants on public property and replace them with native plants.

Local conservation partners, including TICT, NICHES Land Trust, and the Tippecanoe County Partnership for Water Quality (TCPWQ), continued advancing habitat restoration, invasive species management, and water quality initiatives. Through coordinated land stewardship and public education, these organizations contribute to biodiversity protection, carbon storage, and watershed health.



# 3 AGRICULTURE & FORESTRY

TICT hosted multiple volunteer workdays throughout the year, engaging residents in hands-on invasive species removal and habitat restoration projects. Support from partners such as the [City of West Lafayette AmeriCorps Park Allies](#) strengthened implementation capacity and expanded community participation. These collaborative efforts enhance native ecosystems while building local stewardship and climate awareness.



## **COMMUNITY SPOTLIGHT**

**AF 2-C: Gov. operations: Increase support for local parks departments and partner with local organizations to acquire and protect existing high quality forested areas.**

[Tree Lafayette](#) and [West Lafayette Tree Friends](#) continue to play a leading role in expanding and protecting the region’s urban forest through close collaboration with each city’s respective Parks and Recreation departments. Through coordinated planting, maintenance, and stewardship efforts, these partnerships not only enhance tree canopy coverage but also support the preservation of existing high-quality forested areas. Protecting mature trees and natural spaces provides critical benefits, including carbon sequestration, urban heat mitigation, stormwater management, and improved air quality, while strengthening community resilience and advancing shared forestry goals.



Following the ribbon cutting in the summer of 2025, the [West Lafayette Municipal Tree Nursery](#) is cultivating and preparing to distribute native trees and plant species for use in public projects and community plantings. By prioritizing regionally appropriate species, the nursery supports biodiversity, reduces maintenance needs, and enhances long-term climate resilience. This investment strengthens the urban forest while advancing sustainable land management practices.



# 4 WATER, WASTEWATER, & SOLID WASTE

**GOAL 1: Enhance Recycling, Waste Reduction, and Composting - Public Priority Goal**



## **WWSW 1-C: Provide e-waste education within the business community.**

Community tire recycling events, offered throughout the year in addition to E-Waste Days, expanded opportunities to engage residents and the business community in responsible material management and recycling education. These complementary events reinforce best practices for proper disposal of hard-to-manage materials and increase awareness of available recycling resources. Tire recycling provides safe and accessible options for used tire disposal, preventing illegal dumping, reducing fire hazards, and minimizing vector-borne disease risks, while E-Waste Days support education around responsible electronics recycling.



In parallel, support from a local foundation has enabled local partners to advance targeted recycling education and waste diversion initiatives, including outreach, infrastructure improvements, and pilot programs designed to strengthen regional recycling systems. These efforts are further complemented by upcoming operational and infrastructure enhancements at the relocated transfer station, which will improve material handling, increase diversion capacity, and support more effective sorting of solid waste streams.

## **COMMUNITY SPOTLIGHT**

Community-based initiatives also continue to play an important role. The annual holiday tree recycling program at Wolf Park provided residents with an environmentally responsible disposal option for natural trees, with collected materials repurposed for habitat enhancement and erosion control. This seasonal effort demonstrates how accessible, localized programs can reinforce broader education and waste reduction goals.



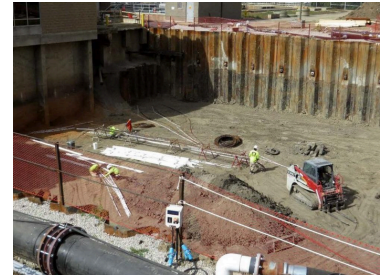
Collectively, these coordinated efforts increase participation, reduce landfill-bound materials, and lower lifecycle emissions associated with material production and disposal, fostering a more resource-conscious community.

# 4 WATER, WASTEWATER, & SOLID WASTE

## GOAL 2: Protect the Quality of Our Water

### WWSW 2-B: Create a flooding risk management program.

Both Lafayette and West Lafayette advanced wastewater infrastructure upgrades as a key component of a broader flood risk management approach. Improvements to system capacity, conveyance, and treatment processes are designed to better manage high-volume storm events, reduce inflow and infiltration, and mitigate combined sewer overflow occurrences during periods of heavy rainfall. These upgrades enhance the ability of wastewater systems to handle storm surges, lowering the risk of localized flooding and minimizing impacts to homes, businesses, and critical infrastructure.



In addition to improving system reliability and treatment efficiency, these investments play an important role in protecting water quality within the Wabash River watershed. By integrating resilience into wastewater infrastructure planning, both communities are strengthening their capacity to respond to more frequent and intense precipitation events, supporting long-term climate adaptation and advancing flood mitigation goals.

WREC's [Central Reach](#) planning efforts continued to address flood mitigation, river corridor restoration, and long-term watershed resilience. The plan integrates green infrastructure, habitat restoration, and strategic land management to reduce flood risk while enhancing ecological function. Coordinated floodplain planning is a key adaptation strategy, supporting both community safety and environmental health.



# MOVING FORWARD

*As Greater Lafayette enters the fourth year of GLCAP implementation, 2026 presents meaningful opportunities to deepen partnerships, strengthen accountability, and expand community impact.*

A key priority for the coming year is enhanced collaboration with Purdue University to better align campus and community sustainability efforts. By strengthening coordination on transportation, energy, research, and innovation initiatives, Greater Lafayette can more effectively leverage shared expertise and advance regional climate solutions.

Additionally, the revival of the Greater Lafayette Commerce EH&S Industrial Roundtable will also re-engage local manufacturers and industrial leaders in peer learning and sustainability best practice exchange. By fostering dialogue across the industrial sector, the Roundtable will support emissions reductions, operational efficiencies, and workforce development aligned with GLCAP goals.

In 2026, the cities of Lafayette and West Lafayette will submit documentation for LEED for Cities certification, a globally recognized sustainability and performance benchmarking program administered by the U.S. Green Building Council. LEED for Cities evaluates communities across a comprehensive set of metrics, including energy use, greenhouse gas emissions, water management, transportation, waste, public health, equity, and quality of life indicators. Unlike a single project certification, this framework assesses overall municipal performance and long-term sustainability outcomes.

Pursuing LEED for Cities certification represents a commitment to transparent reporting, measurable progress, and continuous improvement. The process requires rigorous data collection, cross-departmental collaboration, and identification of opportunities to enhance performance across multiple sectors. Participation strengthens data-driven decision-making, helps align local initiatives with international best practices, and provides an externally validated benchmark for tracking progress over time. By engaging in this certification process, the cities of Lafayette and West Lafayette demonstrate accountability to residents and stakeholders while positioning the municipalities among a global network of cities committed to high-performance, resilient, and equitable communities. Moreover, participation in national benchmarking frameworks reinforces transparency, strengthens data-driven decision-making, and positions Greater Lafayette as a recognized leader in sustainability.

*Continued...*

# MOVING FORWARD

## CONTINUED

Recognizing the evolving administrative and funding landscape, the committee will continue exploring alternative and diversified funding sources to support implementation. Leveraging grants, public-private partnerships, and innovative financing strategies will remain essential to sustaining long-term climate action.

Furthermore, targeted improvements to urban forestry in Lafayette will focus on strategic tree planting, canopy equity, and long-term maintenance planning to maximize environmental and public health benefits. In 2026, Lafayette will participate in Indiana University's Environmental Resilience Institute (ERI) Resilience Cohort focused on urban green infrastructure, providing technical assistance and peer learning opportunities to strengthen local capacity. Participation in this cohort will support data-driven canopy planning, equitable tree distribution strategies, and integration of green infrastructure practices that reduce urban heat, manage stormwater, and improve neighborhood resilience.

To enhance transparency and public engagement, 2026 will also mark the launch of an updated climate action dashboard and website improvements. These tools will provide accessible progress tracking, highlight success stories, and create new opportunities for residents and stakeholders to stay informed and involved. Community members are encouraged to complete the "Get in Touch" form to receive updates on events, initiatives, and the GLCAP e-newsletter.

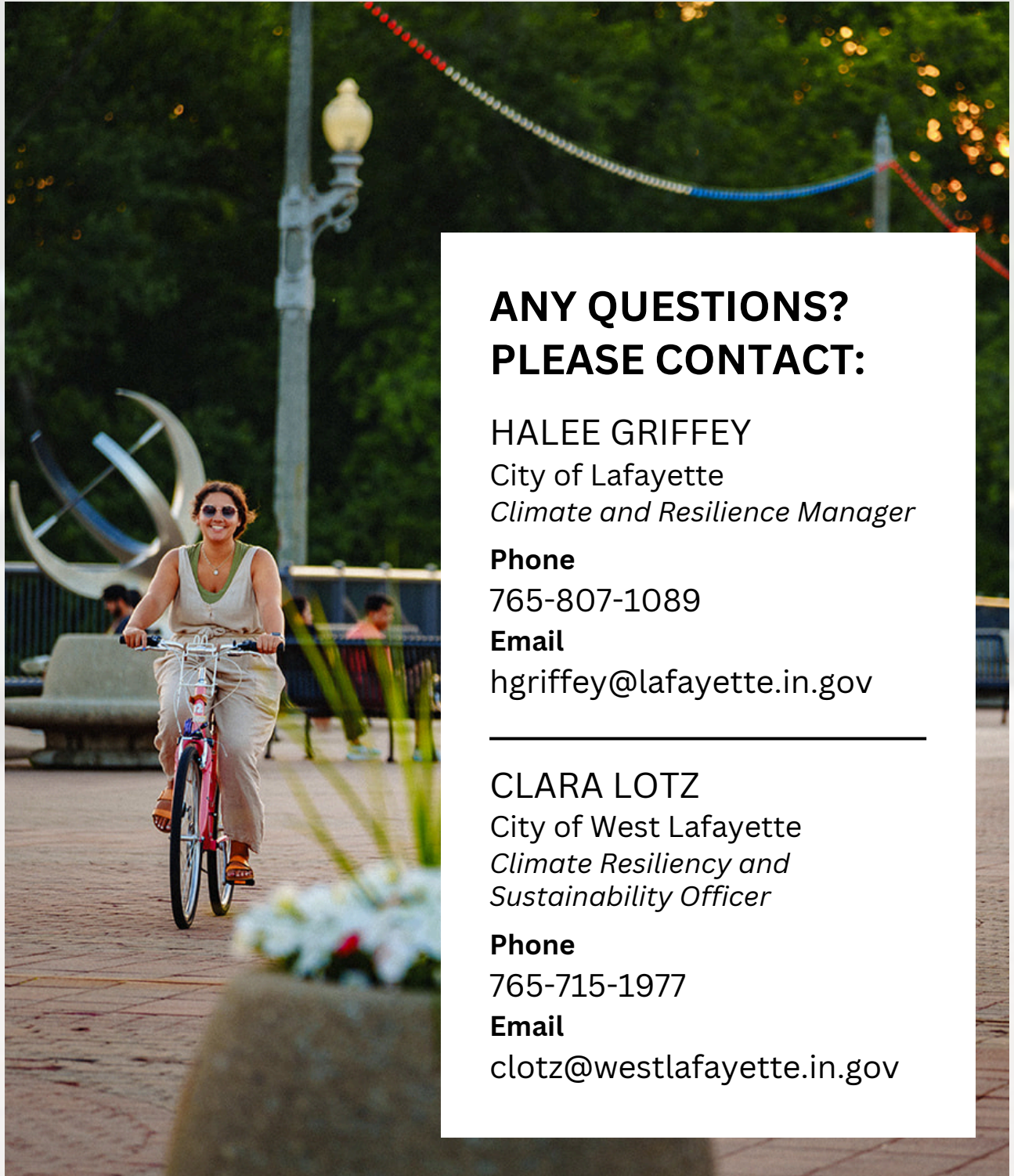
Together, these efforts reflect Greater Lafayette's continued commitment to collaboration, innovation, and measurable progress. As we move forward together, we remain focused on building a resilient, equitable, and thriving community for current and future generations.

As always, the committee is incredibly grateful for the support of our community partners who have helped make the successes of 2025 possible. We look forward to continuing these strong partnerships as we work together toward a more sustainable future in 2026.

*To stay up to date with implementation, please visit the GLCAP website, [greaterlafayetteclimate.com](https://greaterlafayetteclimate.com), and connect with us on social media.*



Greater LAFAYETTE  
**CLIMATE ACTION PLAN**



**ANY QUESTIONS?  
PLEASE CONTACT:**

**HALEE GRIFFEY**

City of Lafayette

*Climate and Resilience Manager*

**Phone**

765-807-1089

**Email**

[hgriffey@lafayette.in.gov](mailto:hgriffey@lafayette.in.gov)

---

**CLARA LOTZ**

City of West Lafayette

*Climate Resiliency and  
Sustainability Officer*

**Phone**

765-715-1977

**Email**

[clotz@westlafayette.in.gov](mailto:clotz@westlafayette.in.gov)